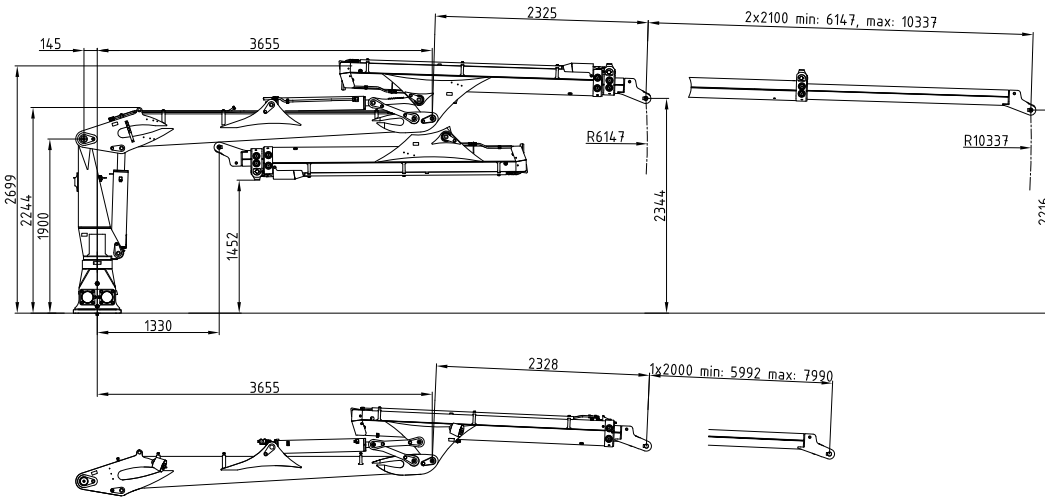
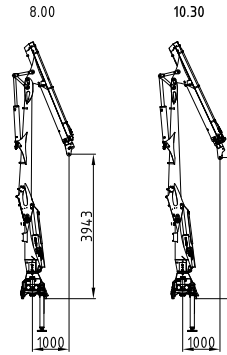
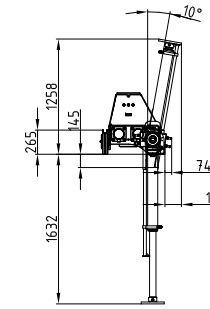


15 LF

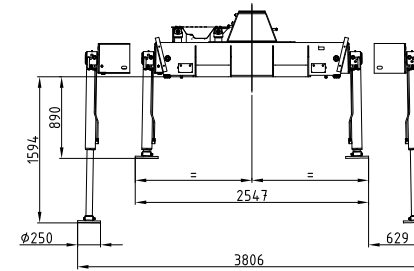
132 - 151 kNm	8 - 10,4 m	3,5 - 3,9 m	3,8 - 5 m	2.205 - 2.490 kg	415°	25 kNm	260 - 300 bar	Minimum 80 l/min ~ 40 kW	Minimum 65 l/min ~ 66 kW	Minimum 170 l/min ~ 85 kW



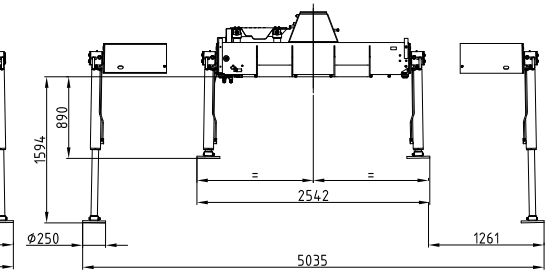
170° Hochklappung
170° of lifting up



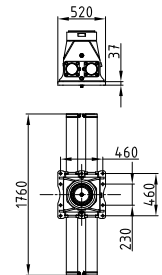
Socket schmal
Crane base small



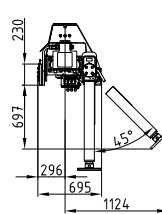
Socket breit
Crane base wide



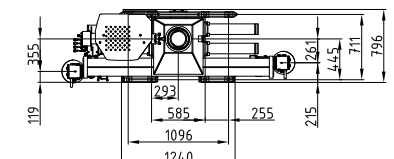
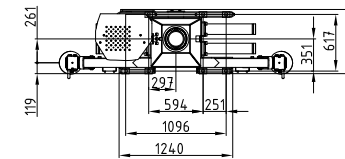
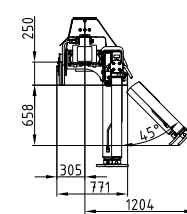
Kransockel stationär
Crane base stationary



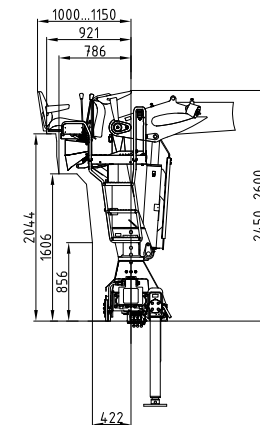
Kransockel schmal
Crane base small



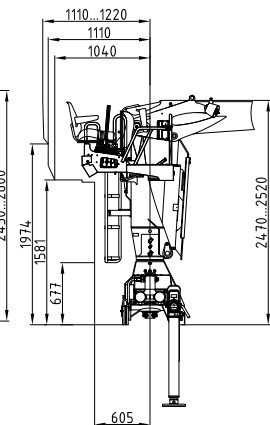
Kransockel breit
Crane base wide



Rücksitz 04
Back seat 04



Seitensitz 04
Side seat 04



	15LF10.30	3250	2675	2225	1900	1640	1435	[kg]
	15LF8.00	3365	2795	2335	2010	1735		[kg]
		4m	5m	6m	7m	8m	9m	